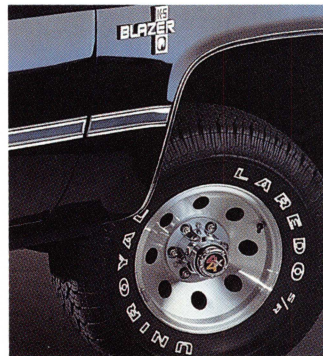


2
OVERVIEW OF AN OVER-ACHIEVER. Full-Size Blazer continues as Chevy's consummate 4-wheeler, bringing high style to the rugged art of trailblazing.



6
DECISIONS, DECISIONS. Comfort and performance options to make your Blazer as civilized and/or as aggressive as you like.

4
PLUSH ON THE INSIDE. Outstanding comfort surrounds you in the outback, in every Blazer interior.

Full-Size Blazer Models 2-3

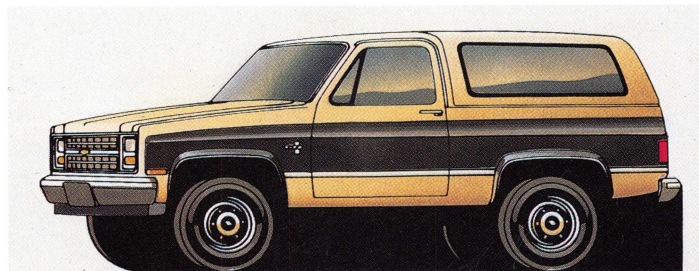
Standard/Silverado Interiors 4-5

Standard/Optional Equipment and Specs 6-7

8
TEN EXTERIOR AND FOUR INTERIOR COLORS. Start thinking about all the colorful possibilities, including Two-Tones.

Interior/Exterior Colors 8

Shown on cover: Full-Size Blazer with optional Exterior Decor Package in Doeskin Tan and Apple Red and optional Silverado trim. Tires supplied by various manufacturers.



The Full-Size Blazer has quite a heritage—one which began in 1969 when Blazer emerged as America's original full-size sport utility vehicle. Many model years later, it is still the ideal vehicle for the adventurer who really wants to go off into the horizon.

Blazer's rugged four-wheel-drive system, big powerplant and high clearance are all designed to get you away from it all. Blazer's superb styling lets you look good while getting away. And Blazer's people-pampering interior lets you take a lot of civilization along for the ride.

Up to five people fit comfortably in Blazer, when the optional second seat is ordered. Blazer's standard payload capacity is 1000 lbs., including passengers, equipment and cargo—and cargo can be easily loaded through Blazer's wagon-style tailgate.

There are two Full-Size Blazer models for you to choose from: a gasoline-powered Blazer with 5.7 Liter (350 Cu. In.) V8 and Electronic Fuel Injection and a diesel-powered Blazer with 6.2 Liter (379 Cu. In.) V8. Both models feature standard power brakes, power steering and steel-belted, all-season radial tires.

And both models can be ordered with standard (Custom Deluxe) or up-level (Silverado) trim packages.

Both models are also built for outstanding toughness in the outback. Standard Blazer attributes include:

- Carbon steel frame with side rails and cross members.
- A 1.25-in. front stabilizer bar.
- Reverse-arch front springs that lower the body height without reducing clearance.
- Two-stage multi-leaf spring rear suspension to cushion the ride in rough terrain.
- Standard 4-speed manual transmission in the gasoline-engine model. (A 4-speed automatic is optional.)
- Standard 4-speed automatic transmission with overdrive in the diesel engine model.

2WD/4X4 VERSATILITY

- Use Blazer's 2WD mode for normal highway driving, and 4x4 High for off-roading.
- Gear down to 4x4 Low for extremely rugged terrain, deep mud and thick snow.
- Dependable manual locking hubs come standard. Blazer's optional automatic hub system allows front hubs to be engaged or disengaged without leaving the driver's seat.
- The fully synchronized 2-speed transfer case allows shifting into 4x4 High at speeds up to 25 MPH with automatic hubs.

Transfer case shift lever with 2WD/4x4 indicator.



EXTENSIVE ANTI-CORROSION PROTECTION

The 1988 Full-Size Blazer is carefully designed and built to resist corrosion, so the application of additional rustproofing is neither necessary nor required. Chevrolet's confidence in its extensive anti-corrosion protection is reflected in a new-truck warranty which includes 6-year/100,000-mile rust-through protection. See your dealer for terms and conditions of the limited warranty.



Full-Size Blazer in Frost White with optional Silverado trim. Tires supplied by various manufacturers.



Full-Size Blazer with Special Two-Tone paint. A properly equipped Blazer can move up to 12,000 lbs., including vehicle, trailer, passengers, cargo and equipment.

Mechanically, the Full-Size Blazer is designed and built for high adventure. Internally, it's carefully outfitted as an adventure in uncommon comfort.

THE STANDARD (CUSTOM DELUXE) TRIM

- High-back front bucket seats in Custom Vinyl. (An optional rear bench seat in matching trim expands seating to five.)
- Full-foam construction in front buckets for long-wearing, sag-free seating.
- Color-keyed molded door trim panels.
- Black rubber floor mats.
- Tinted glass.
- The front passenger seat includes a sliding mechanism: When you fold down the



Standard (Custom Deluxe) interior with Custom Vinyl.

bucket, it automatically slides forward to provide passage, then returns easily to position.

- The fully padded instrument panel accommodates easy-to-read gages in a black finish with bright trim. Gages include speedometer, trip odometer, fuel, voltmeter, oil pressure and engine temperature.
- Interior lamps.
- Heavy-duty heater and defroster.

- AM radio with fixed-mast antenna (may be deleted for credit).

OPTIONAL SILVERADO PACKAGE

These top-of-the-line accommodations include:

- High-back reclining front bucket seats.
- Your choice of Custom Cloth or Custom Vinyl seat fabrics.
- Color-keyed carpeting, which extends throughout the vehicle when the optional rear seat is ordered.
- Custom steering wheel.
- Brushed pewter-toned door and instrument panel trim.
- Center console with storage and beverage pockets.
- Cloth headliner (above front seats only).
- Interior assist strap.
- Right visor mirror.
- Spare tire cover.

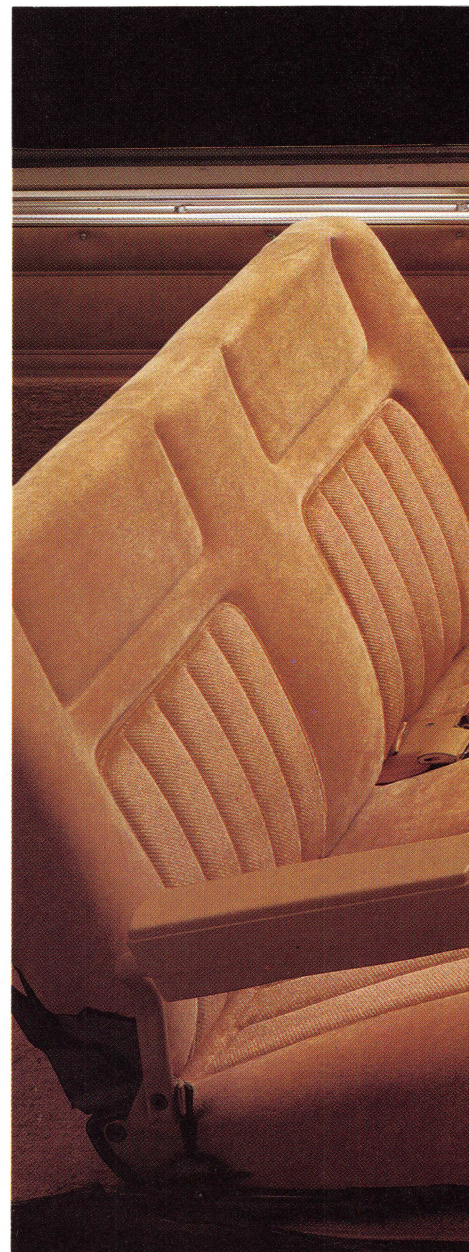
Exterior Silverado appointments include Rally Wheels, electric tailgate window, halogen quad headlamps, deluxe body-side moldings, bright marker lamp bezels, bright grille trim and bright trim on headlights and nameplates.

AVAILABLE OPTIONS You will find a full complement of appearance, convenience and performance options on pages 6 and 7.

CARGO CAPACITY When it's time to pack in cargo, it's obvious why this Blazer is called "full-size."

- Almost five feet of cargo space opens up when the rear seat is folded down.
- A wagon-style tailgate facilitates loading and unloading.

Full-size Blazer is impressive, whether you need riding comfort, cargo capacity or a tough combination of both.





Optional Silverado interior trim in Saddle with Custom Cloth.

STANDARD INTERIOR

- **Armrests:** On RH and LH door, padded.
- **Cigarette lighter.**
- **Dome Lamps:** Two, with door-operated switches.
- **Door Trim Panels:** Color-keyed molded plastic.
- **Floor Covering:** Black rubber floor mats.
- **Heater/Defogger:** Heavy-duty, outside-air-type.
- **Inside-Hood Lock Release.**
- **Instruments:** Gages—Speedometer, trip odometer, oil pressure, engine temperature, voltmeter and fuel. Switches—Lights, for interior, exterior and instrument panel. On steering column for direction signals, headlamp low/high beam and windshield washers/wipers. Hazard warning, heater fan and ignition with key-in warning buzzer.
- **Insulation and Sound-Deadening Material:** On dash panel, under floor mats and on roof panels.
- **Lights:** Instrument cluster, cab interior and dome.
- **Mirror, Rearview:** 10" prismatic.
- **Radio:** AM with mast antenna (may be deleted for credit).

- **Safety Belts:** All seating positions; includes shoulder belts in front-seat positions.
- **Seats:** Foam-padded, high-back driver and passenger with Custom Vinyl trim.
- **Spare Tire Carrier:** On RH rear panel.
- **Stowage Box:** RH side of instrument panel, with key lock.
- **Tools:** Mechanical jack and wheel wrench.
- **Warning Lights:** Seat belt, service/parking brake, direction/hazard signal and high beam.

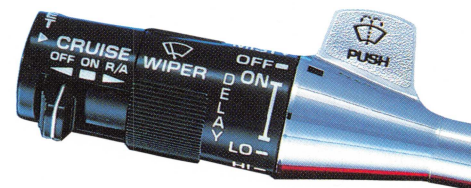
STANDARD EXTERIOR

- **Bumpers:** Front and rear, chromed.
- **Fuel Tank:** 31-gal. (gasoline); 32-gal. (diesel).
- **Glass:** Tinted, all windows.
- **Grille:** Molded plastic, painted argent.
- **Horn:** Dual electric, low- and high-note.
- **Hubcaps:** Bright metal/black trim.
- **Lights:** Backup lamps integral with tail lamps. Two rectangular headlamps, plus front and rear direction and parking lamps.
- **Mirrors:** RH and LH, Below Eyeline, painted White.

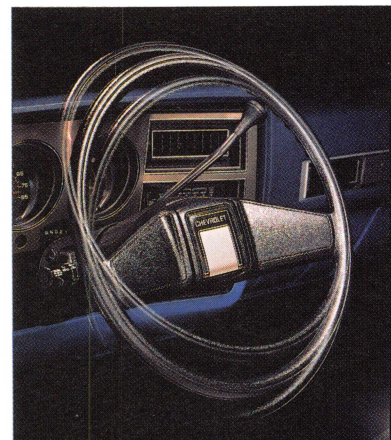
- **Removable Top:** Molded plastic reinforced with fiberglass.
- **Tailgate:** Double-wall construction with reel-type cables. Includes roll-down glass and key lock.
- **Windshield Wipers and Washers:** Electric, two-speed.

OPTIONAL EQUIPMENT APPEARANCE AND CONVENIENCE OPTIONS

- **Air Cleaner, Precleaner**
- **Air Conditioning**
- **Bumpers:** Chromed Front Bumper Guards, Deluxe Front and Rear
- **Color-Keyed Floor Mats**
- **Comfortilt Steering Wheel**
- **Deluxe Front Appearance Group** (includes halogen headlamps)
- **Door Edge Guards**
- **Electric Quartz Clock**
- **Glass, Sliding Rear Side Windows**
- **Headlight Warning Buzzer**
- **Headliner:** Cloth (included in Silverado)
- **Intermittent Windshield Wipers**
- **Mirrors:** Stainless Steel Below Eyeline
- **Moldings:** Body-Side, Black Body-Side, Bright



Optional electronic speed control and intermittent wipers are on the standard multi-function lever.



Optional Comfortilt steering wheel.

- **Custom Molding Package, Black**
- **Deluxe Molding Package, Bright**
- **Operating Convenience Package** (Power Door Locks and Power Windows)
- **Paint Options:** Special Two-Tone Paint
- **Exterior Decor Package**
- **Radio Equipment, Delco AM/FM Stereo Radio w/Digital Clock**



Full-size Blazer in Black, shown with the following optional items: Silverado trim, luggage rack (dealer-installed), deep-tinted windows, sliding rear side windows, power rear window, white-letter tires and aluminum wheels. Tires supplied by various manufacturers.

AM/FM Stereo w/Cassette Tape Player, Seek and Scan and Digital Clock

- Seat, Folding Rear
- Tailgate, Electric Window
- Tires, Puncture-Sealant
- Wheel Covers, Bright Metal
- Wheels: Aluminum, Rally



Optional Rally Wheels (standard on Silverado).



Optional aluminum wheels.

PERFORMANCE AND HEAVY-DUTY EQUIPMENT OPTIONS

Automatic Locking Front Hubs	■ ■
Battery, Heavy-Duty	■
Cold Climate Package	■
Deadweight Trailer Hitch	■ ■
Electronic Speed Control	■ ■
Engine Oil Cooler	■
Front Quad Shocks	■ ■
Front Springs, Heavy-Duty	■ ■
Front Tow Hooks	■ ■
Fuel Tank, Stone Shield Plate	■ ■
Limited-Slip Rear Axle Differential	■ ■
Radiator, Heavy-Duty	■
Trailer Special Equipment	■ ■
Trailer Wiring Harness	■ ■
Transmission Oil Cooler and Heavy-Duty Radiator	■ ■
Weight-Distributing Hitch Platform	■ ■

■ : Gas. ■ : Diesel.

FULL-SIZE BLAZER SPECIFICATIONS

Series	4-Wheel-Drive Gas	4-Wheel-Drive Diesel
GVWR (lb.)	6100	6250
Engine-Liter (cu. in.)	5.7L (350) V8 w/EFI	6.2L (379) V8*
Transfer Case	Conventional NP 208	Conventional NP 208
Front Suspension-Type Spring	Hypoid Driving Axle/Leaf Spring	Hypoid Driving Axle/Leaf Spring
Axle Capacity (lb.)	3600	3600
Rear Suspension-Axle Type	Semi-Floating	Semi-Floating
Capacity (lb.)	3750	3750
Brakes-Disc/Drum	Power	Power
Steering-Type	Power	Power
Transmission, Std. Opt.	4-Speed Manual* 4-Speed Auto./O.D.	4-Speed Auto/O.D. —
Front Hubs, Std. Opt.	Manual Auto. Locking	Manual Auto. Locking
Tire Size, Tubeless	P235/75R-15†	P235/75R-15†

*Not available in California. †Larger size tubeless tires available.

ENGINE SPECIFICATIONS

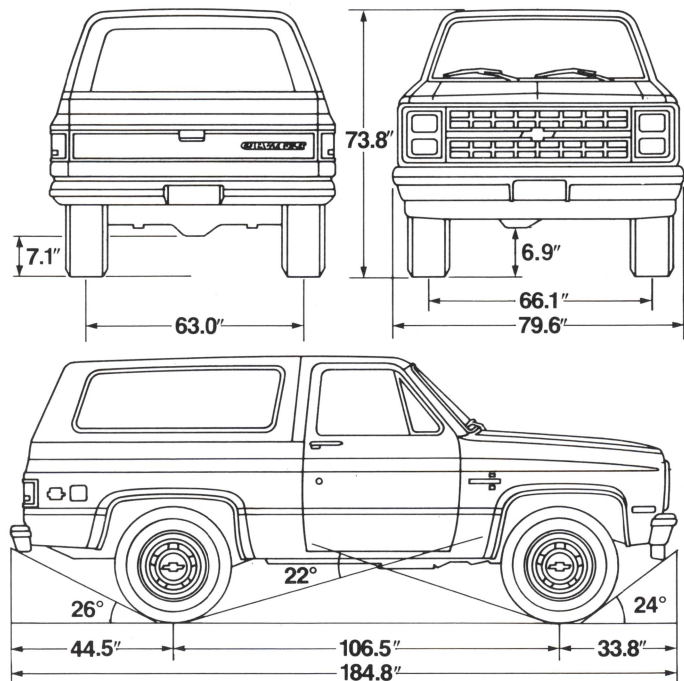
Series	4-Wheel-Drive Gas	4-Wheel-Drive Diesel
Displacement-Liter (cu. in.)	5.7 (350) V8 w/EFI	6.2 (379) V8 Diesel
Engine Ordering Code	L05(A)	LH6
Bore & Stroke (in.)	4.0 x 3.48	3.98 x 3.82
Compression Ratio	9.3 to 1	21.3 to 1
SAE Net Horsepower @ RPM	210 @ 4000	130 @ 3600*
SAE Net Torque (lb.-ft.) @ RPM	300 @ 2800	240 @ 2000*

*1987 ratings. See your dealer for 1988 ratings.

(A) Produced in U.S. and Canada.

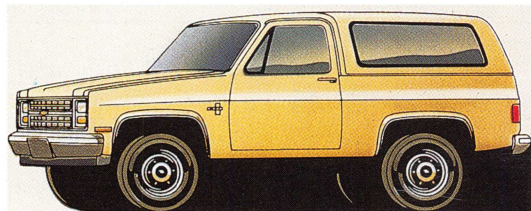


Optional Delco AM/FM stereo radio with cassette tape player, Seek and Scan and digital clock.

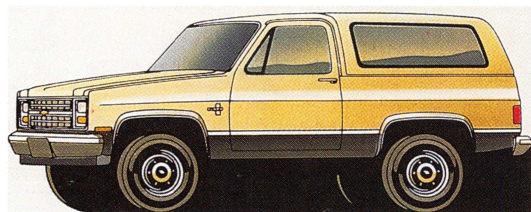




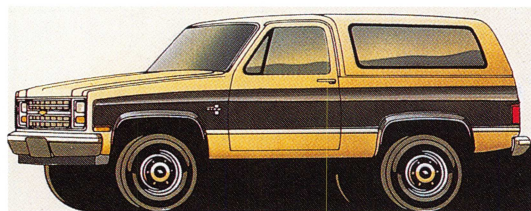
FULL-SIZE BLAZER PAINT TREATMENTS



COLOR-KEYED TOP is standard with Midnight Black, Midnight Blue, Woodlands Brown Metallic, Steel Gray Metallic, Doeskin Tan and Frost White. See your Chevy dealer for full information on top color choices.



SPECIAL TWO-TONE (Optional) includes Black vinyl body-side and rear moldings.



EXTERIOR DECOR PACKAGE (Optional) includes moldings and side and rear decal striping.

INTERIOR AND EXTERIOR COLOR AVAILABILITY CHART

TRIM LEVEL	INTERIOR COLORS			
	Blue	Burgundy	Saddle	Slate Gray
Seat Type				
CUSTOM DELUXE				
Custom Vinyl High-Back Bucket Seats	■		■	
Custom Vinyl High-Back Reclining Bucket Seats	■		■	
SILVERADO				
Custom Vinyl High-Back Reclining Bucket Seats	■	■	■	■
Custom Cloth High-Back Reclining Bucket Seats	■	■	■	■
EXTERIOR COLORS				
Solid and Two-Tone Combinations*				
BLACK, MIDNIGHT	■	■	■	■
Blue, Aspen (Metallic)	■			■
Gold, Yukon (Metallic)			■	
Gray, Steel (Metallic)		■		■
Red, Apple		■		■
Tan, Doeskin			■	
BLUE, ASPEN (Metallic)	■			■
Black, Midnight	■			■
Blue, Midnight	■			■
Gray, Steel (Metallic)	■			■
White, Frost	■			■
BLUE, MIDNIGHT	■			■
Blue, Aspen (Metallic)	■			
Gold, Yukon (Metallic)			■	
Gray, Steel (Metallic)	■			■
Tan, Doeskin			■	
White, Frost	■			
BROWN, WOODLANDS (Metallic)			■	
Black, Midnight			■	
Gold, Yukon (Metallic)			■	
Tan, Doeskin			■	
EMERALD (Metallic)			■	
Gold, Yukon (Metallic)			■	
Gray, Steel (Metallic)			■	■
Tan, Doeskin			■	
GOLD, YUKON (Metallic)			■	
Black, Midnight			■	
Blue, Midnight			■	
Brown, Woodlands (Metallic)			■	
Emerald (Metallic)			■	
Red, Apple		■		
Tan, Doeskin			■	
GRAY, STEEL (Metallic)	■	■		■
Black, Midnight		■		■
Blue, Aspen (Metallic)	■			■
Blue, Midnight	■			■
Emerald (Metallic)				■
Red, Apple		■		■
White, Frost		■		■
RED, APPLE		■	■	
Black, Midnight		■		■
Gold, Yukon (Metallic)			■	
Gray, Steel (Metallic)		■		■
Tan, Doeskin		■	■	
White, Frost		■		
TAN, DOESKIN		■	■	
Black, Midnight		■		
Blue, Midnight			■	
Brown, Woodlands (Metallic)			■	
Gold, Yukon (Metallic)		■	■	
Red, Apple		■	■	
White, Frost		■	■	
WHITE, FROST	■	■	■	■
Black, Midnight		■		■
Blue, Aspen (Metallic)	■			
Gold, Yukon (Metallic)			■	
Gray, Steel (Metallic)	■	■		■
Red, Apple		■		
Tan, Doeskin			■	

*For Exterior Decor Package color combinations, see your Chevy dealer.

THE
Heartbeat

OF
AMERICA.

TODAY'S CHEVY TRUCK



FULL-SIZE BLAZER

1988 CHEVY TRUCKS



IMPORTANT: A WORD ABOUT THIS CATALOG. We have tried to make this catalog as comprehensive and factual as possible and we hope you find it helpful. However, since the time of printing, some of the information you will find here may have been updated. Also, some of the equipment shown or described throughout this catalog is available as factory-installed options, dealer accessories and specialized equipment from various independent suppliers at extra cost. Your dealer has details and, before ordering, you should ask him to bring you up to date. The right is reserved to make changes at any time, without notice, in prices, colors, materials, equipment, specifications and models. Check with your Chevrolet dealer for complete information.

A WORD ABOUT ASSEMBLY, COMPONENTS AND OPTIONAL EQUIPMENT IN THESE CHEVROLET PRODUCTS. The Full-Size Chevrolet Blazers described in this catalog (Series V10) are assembled at facilities operated by General Motors. These vehicles incorporate thousands of different components produced by car and truck groups and various component divisions of GM and by various suppliers worldwide to General Motors. From time to time during the manufacturing process, it may be necessary, in order to meet public demand for particular vehicles or equipment, or to meet federally mandated emissions, safety or fuel economy requirements, or for other reasons, to produce Chevrolet products with sourced components than initially scheduled. All such compo-

nents have been approved for use in Chevrolet products and will provide the quality performance associated with the Chevrolet name.

With respect to factory-installed extra-cost optional equipment, make certain you specify the type of equipment you desire on your vehicle when ordering it from your dealer. Some options may be unavailable when your truck is built. Your dealer receives advice regarding current availability of options. You may ask your dealer for this information. GM also requests the dealer to advise you if an option you ordered is unavailable. We suggest that you verify that your vehicle includes the optional equipment you ordered or, if there are changes, that they are acceptable to you.

These vehicles are also available under the GMC nameplate GMC Jimmy Series V1500.

A WORD ABOUT ENGINES. Chevrolets are equipped with engines produced by GM or suppliers to GM worldwide.

AS PROVIDED BY THE 1988 CHEVROLET NEW-VEHICLE LIMITED WARRANTY, your Chevy truck outer body has 6-year/100,000-mile perforation-from-corrosion coverage. See your Chevy dealer for terms and conditions.

GM PROTECTION PLAN. The GM Protection Plan offers service protection in addition to that provided by GM's new-vehicle limited warranty. Ask your dealer about it. Coverage available only in the U.S. and Canada.

FOR INFORMATION ON ANY NEW CHEVY TRUCK. See your Chevy dealer for a complete selection of 1988 truck catalogs. They include ■ S-10 Pickup ■ Full-Size Pickup ■ S-10 Blazer ■ Full-Size Blazer ■ Astro/Sportvan ■ Chevy Van/Astro Van ■ Suburban ■ Special Vehicles and ■ Chevy Recreation and Trailering Guide.

A WORD ABOUT UPDATED SERVICE INFORMATION. Chevrolet regularly sends its dealers useful service bulletins about Chevrolet products. Chevrolet monitors product performance in the field. We then prepare bulletins for servicing our products better. Now you can get these bulletins, too. Ask your dealer. To get ordering information, call toll-free 1-800-551-4123.

MORE DEALERS TO SERVE YOU. With nearly 5,000 servicing dealers nationwide, Chevrolet offers a more extensive parts/service network than any other truck company.

GMAC FINANCING. At your Chevrolet dealer's, financing or leasing your new Full-Size Blazer can be as easy as saying GMAC.

LET'S GET IT TOGETHER... BUCKLE UP.

Best-backed Chevys ever. Every new light-duty Chevy truck is now backed by 6-year/60,000-mile powertrain warranty protection and 6-year/100,000-mile outer-body rust-through protection. Solid proof of the confidence we have in the quality built into every new Chevy light-duty truck.



See your Chevrolet dealer for terms and conditions of the limited warranty.